

# ATTENDING BUSINESS CENTRAL connect

WEDNESDAY 16th OCTOBER 2024

This year's Business Central Connect is being held at:  
**Delta Hotels by Marriott Warwick, Stratford Road,  
 Warwick, CV34 6RE**



### By Car

If you are travelling by car and using Sat Nav please use postcode CV34 6RE



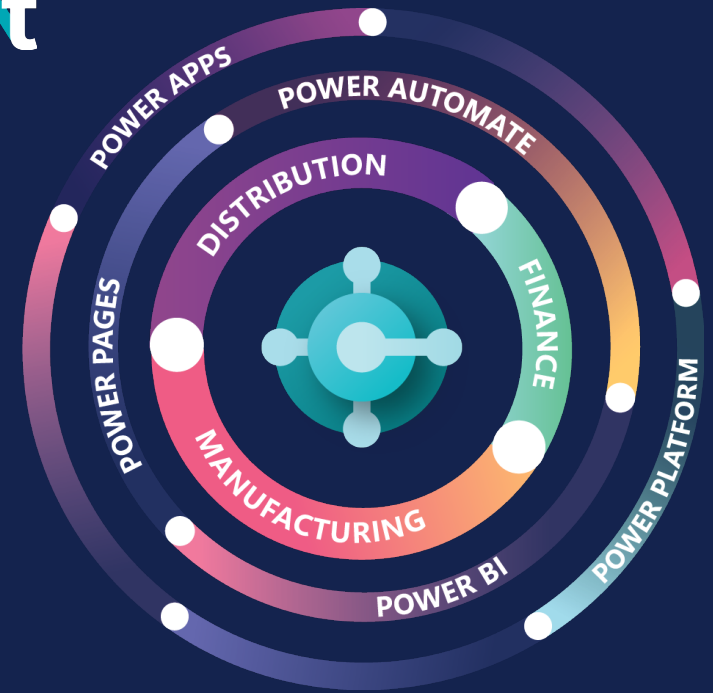
### By Rail

The nearest mainline rail station is at Warwick (3 miles)



### By Air

Birmingham International Airport is approximately a 40-minute car/taxi journey



### Timings:

- 9:00am - Registration & Refreshments
- 9:30am - Chosen Track
- 10:30am - Refreshment break
- 11:00am - Chosen Track
- 12:00pm - Lunch
- 1:00pm - Chosen Track
- 2:00pm - Refreshment break
- 2:30pm - Chosen Track
- 3:00pm - Close

### Accommodation:

Below is a list of local hotels.

| Hotel                                | Star Rating | Distance from venue | Telephone    |
|--------------------------------------|-------------|---------------------|--------------|
| Delta by Marriot, Warwick            | 4*          | 0 miles             | 01926 499555 |
| The Warwick Arms, Warwick            | 3*          | 0.5 miles           | 01926 492759 |
| The Travel Lodge, Leamington Spa     | 3*          | 3 miles             | 08719 846239 |
| Holiday Inn, Leamington Spa          | 3*          | 3 miles             | 03333 209334 |
| The Arden Hotel, Stratford-upon-Avon | 4*          | 10 miles            | 01789 298682 |

**Your evening meal on the 15th October is included in your purchased package. Please let us know if you would like to join us for this meal at the Delta by Marriot (event venue).**