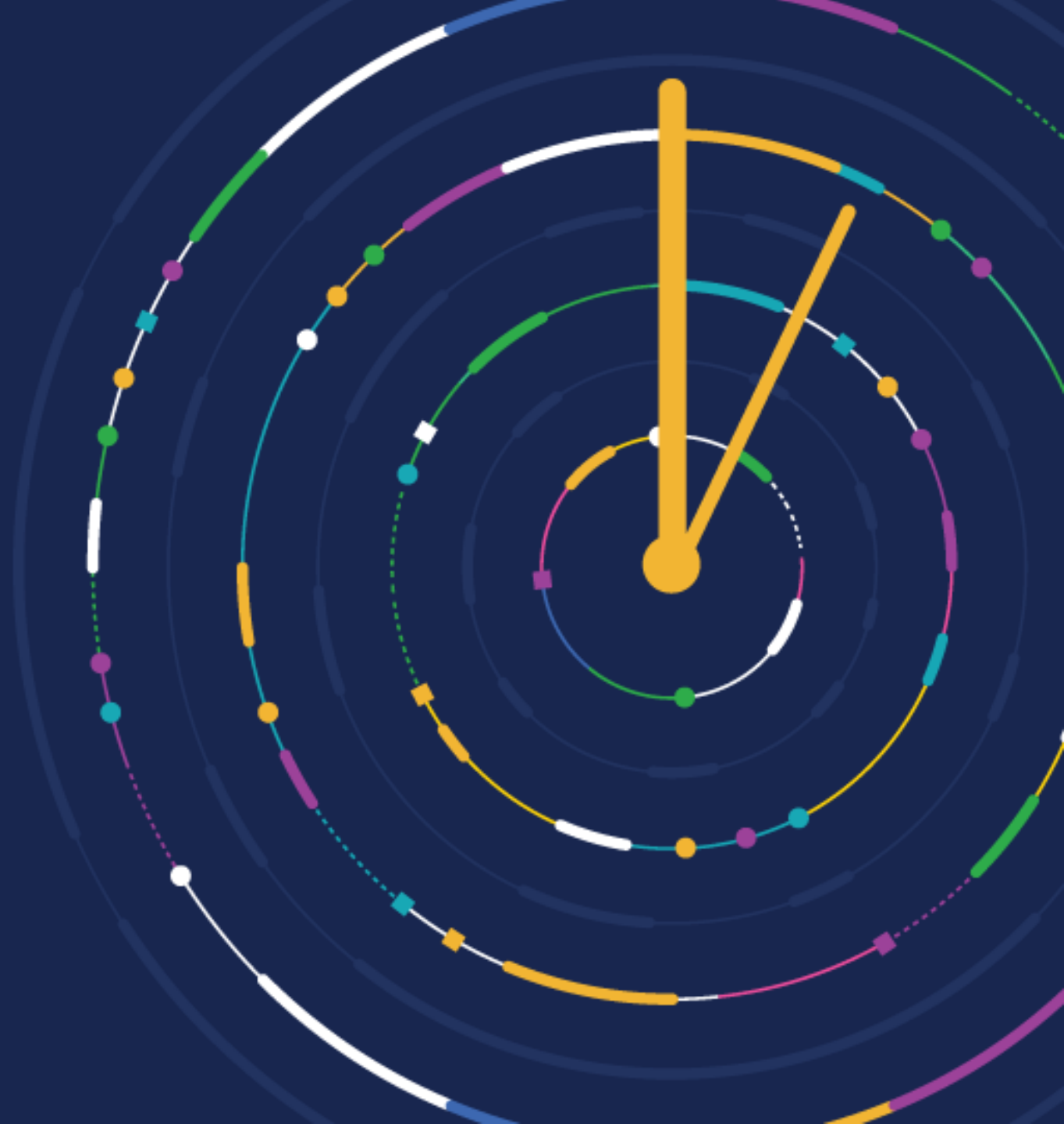
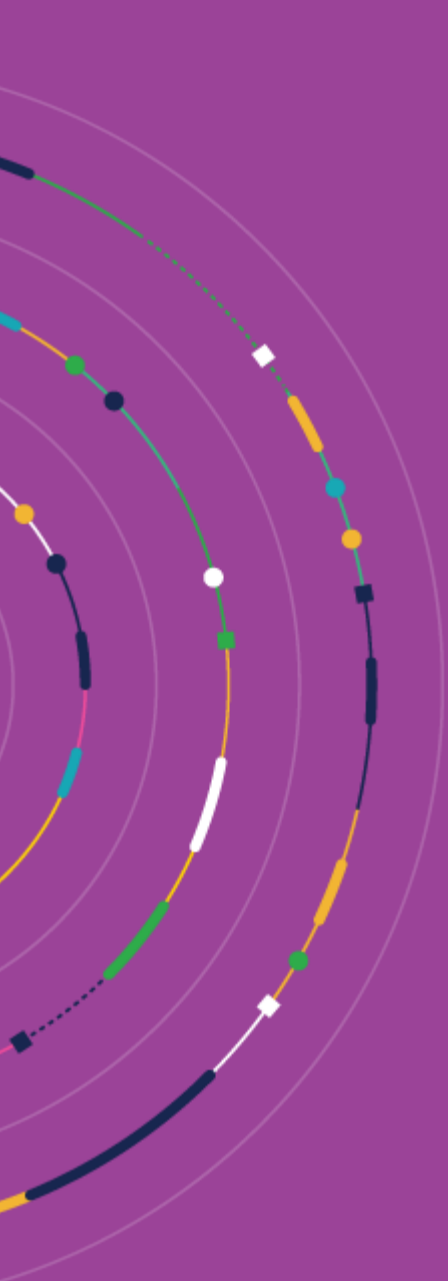


Reservations in Business Central – a hopeless headache or a useful tool to lock inventory?

Klaudia Olczak & Paul Osborne

CUSTOMER DAY 2023





Introductions

Agenda

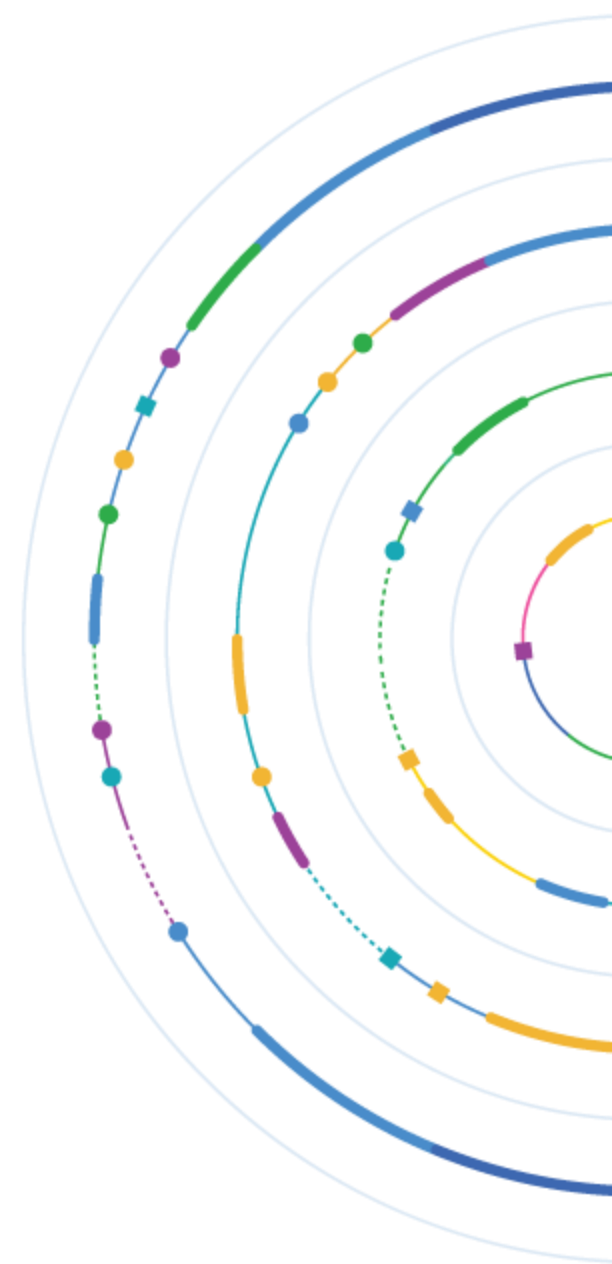
- What are Reservation Entries
- Useful tool
- Hopeless mess
- Future changes
- Summary



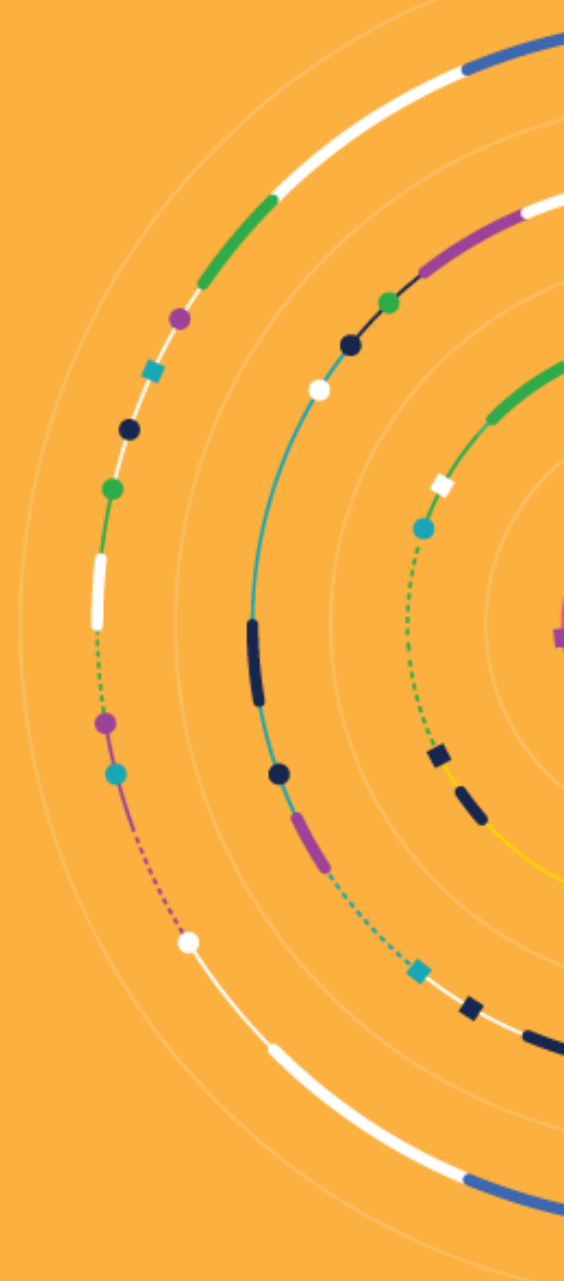
What are Reservations

What are Reservations?

- Different types of reservations
- Reservations can be triggered via a process i.e., Planning
- Reservations can be triggered via an action i.e., Reserve function



Useful Tool



Why use Reservations?

- Availability is based assumptions
- Specific demand i.e., Export
- Transport efficiency
- Demand/supply linked
- Stock outs



Business Rules / Requirements

- Who should create/cancel Reservations?
- What date range should you allow Reservations?
- What happens if the Customer is Credit Held/Overdue?
- Who decides on priorities?
- What happens when inventory that is reserved is written off?
- What Bins should be reserved?
- Do you reserve inventory or documents?
- What happens if supply is delayed?
- Partial/Complete shipment

Limitations of standard reservations

- Standard is not efficient
- ALWAYS reserve may require manual intervention
- No date limitations
- No distinction of inventory/documents reservations
- No visibility of what can be made i.e., Assembly
- Special Orders don't create reservations
- Reservations work at inventory not Bins



Customise

- Can we customise reservation processes?
- Why Customise? BUT potentially will increase
 - Complexity
 - Unit Testing
 - User Acceptance Testing

However, if done properly on stable business rules should make your processes more efficient and offer a return on investment

Hopeless Mess



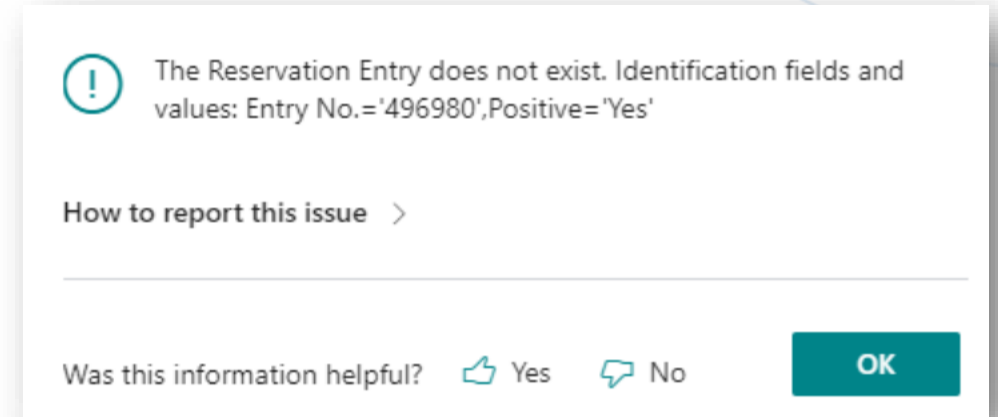
Complicated engine which requires regular maintenance

- Originally designed to support “true” reservations, nowadays different types of Entries coming from different sources into one table – constantly moving data
- The demand will always be linked to either supply currently in stock (available on Inventory) or stock that is scheduled to be available, this is not always accurate
- Any changes to documents (e.g. Location, Shipment Date, Quantity) will trigger re-shuffling
- Changes to reservations can only be manual



What are the symptoms?

- The most common issue – orphaned entry
- Not able to post transactions
- Costing issues – as the link determines how Item Ledger Entries will be applied to each other after posting
- 180 cases logged so far in 2023 for **all types** of Reservation Entries issues
- Microsoft provides regular hotfixes



What can cause problems?

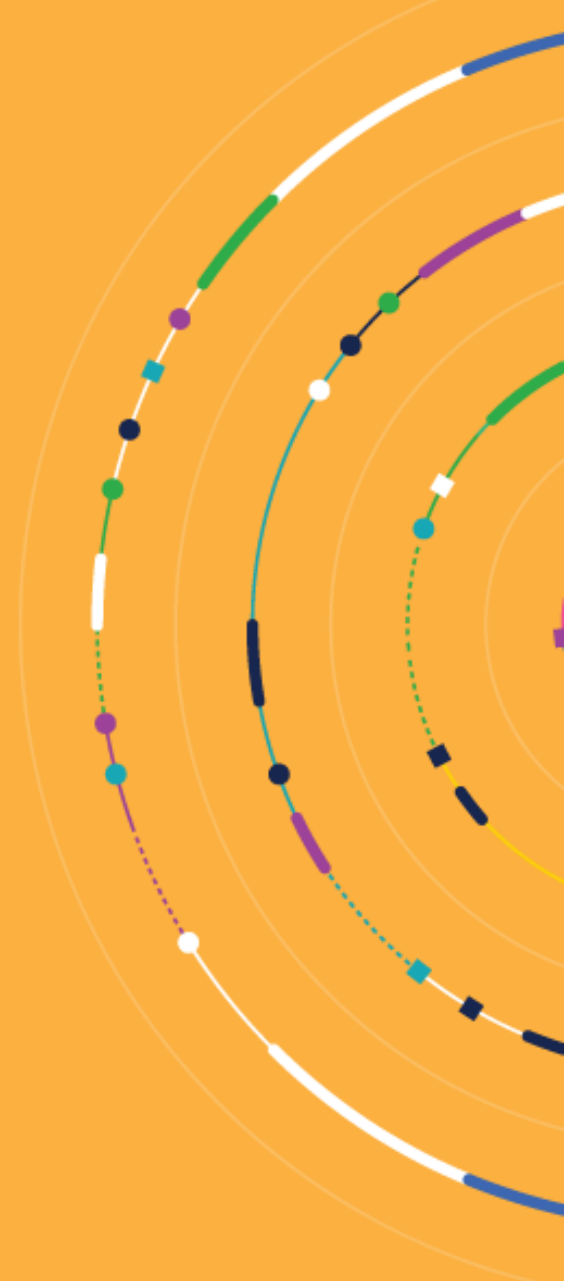
- Lot and Serial Tracking
- 3rd Party Products – code visibility
- Bespoke functions – the importance of testing
- Changes to processes – what we scope for cannot predict future business requirements
- Microsoft updates – the importance of signing up for Cloud Control
- Damaged stock and incomplete delivery and delays

Difficult to troubleshoot

- Fixing data is not always straightforward – deleting is not always an option
- We see the problem after it's already happened
- Very hard to replicate if a problem occurs
- Users can access the table (337) but cannot modify
- SAAS platform allows to troubleshoot it easier

18/01/2022	⋮	Sale	Sales Ship...	102001	1928-S		SALES	MEDIUM	-3	-3
19/01/2022		Sale	Sales Ship...	102002	1960-S		SALES	SMALL	-4	-4
20/01/2022		Sale	Sales Ship...	102003	1988-S		SALES	LARGE	-1	-1
21/01/2022		Sale	Sales Ship...	102004	1968-S		SALES	MEDIUM	-2	-2
22/01/2022		Sale	Sales Ship...	102005	1960-S		SALES	SMALL	-2	-2
23/01/2022		Sale	Sales Ship...	102006	1900-S		SALES	MEDIUM	-4	-4
23/01/2022		Sale	Sales Ship...	102006	1964-S		SALES	MEDIUM	-5	-5
23/01/2022		Sale	Sales Ship...	102006	1980-S		SALES	MEDIUM	-3	-3
23/01/2022		Sale	Sales Ship...	102007	1896-S		SALES	SMALL	-5	-5
23/01/2022		Sale	Sales Ship...	102007	1972-S		SALES	SMALL	-2	-2
23/01/2022		Sale	Sales Ship...	102007	1996-S		SALES	SMALL	-4	-4
25/01/2022		Sale	Sales Ship...	102008	1906-S		SALES	MEDIUM	-6	-6
26/01/2022		Sale	Sales Ship...	102009	1928-S	Red Swivel Lamp	SALES	LARGE	-7	-7
26/01/2022		Sale	Sales Ship...	102010	1908-S		SALES	SMALL	-5	-5
26/01/2022		Sale	Sales Ship...	102010	1920-S		SALES	SMALL	-3	-3
26/01/2022		Sale	Sales Ship...	102010	1968-S		SALES	SMALL	-4	-4
26/01/2022		Sale	Sales Ship...	102010	1980-S		SALES	SMALL	-1	-1
28/01/2022		Sale	Sales Ship...	102011	1900-S		SALES	MEDIUM	-4	-4

What's New



What's new in BC?

- Reservation Worksheet (Batches/bulk reserve)
- Ability to check the status of the demand document
- Ability to move documents to the next stage

Reservation Worksheet



Reservation Worksheet

✓ Saved



Batch Name

CD

Analyse Manage Home Allocate Reserve Line | More options



Empty Batch Get Demand...



	Source Document	Sell-to Customer Name	Demand Date	Acc...	Item No.	Description
→	Sales Order 101002	Adatum Corporation	01/05/2023	<input type="checkbox"/>	1928-S	AMSTERDAM Lamj
	Transfer Outbound 1003		04/04/2023	<input type="checkbox"/>	1968-S	MEXICO Swivel Ch.
	Job JOB00010	School of Fine Art	25/01/2023	<input type="checkbox"/>	1936-S	BERLIN Guest Chai
	Job JOB00020	Adatum Corporation	25/01/2023	<input type="checkbox"/>	1920-S	ANTWERP Confere
	Job JOB00030	Trey Research	25/01/2023	<input type="checkbox"/>	1908-S	LONDON Swivel Cl

Details

Demand



Line No. 30000
Outstanding quantity 7
Reserved quantity 2
Reserved from stock 2








Inventory

Current stock 8
Reserved quantity 2
Qty. in warehouse handling 0


Latest changes






Reservation Batches


Allocation Policy Saving...  

Search Analyze + New  Edit List  Delete  Move Up  Move Down ...   

Specify one or more allocation policies to control how you distribute available inventory among demands.

	Step No. 1	Name
	1	Basic (No Conflicts)
→	2	Equally  ...


Reservation Wksh. Batch Card   +  ✓ Saved  

 Allocation Policies... More options

General

Name Description

Filters

Demand Type  Item Filter

Start Date Formula Variant Filter

End Date Formula Location Filter

- All
- Sales Orders
- Transfer Orders
- Service Orders
- Job Usage
- Production Components
- Assembly Components

Sales Document (FactBox / Stats)

Details

Attachments (0)

Attachments

Documents 0

Availability

Shipment Date 4/26/2023

Item Availability 0

Available Inventory 0

Scheduled Receipt 0

Reserved Receipt 0

Gross Requirements 1

Reserved Requirements 1

Reserved from stock None

Sales Order Statistics - S-ORD101012 - Adatum Corporation

Page		
TOTAL INCL. TAX	100.00	COST ADJUST. AMOUNT (\$) 0.00
Sales (\$)	100.00	Sales Tax Breakdown:
Profit (\$)	50.00	
Adjusted Profit (\$)	50.00	
Original Profit %	50.0	
Adjusted Profit %	50.0	
Quantity	1	No. of Tax Lines 3
Net Weight	0	Reserved from stock None

Next Stages

Create Warehouse Shipment



Use default values from **Last used options and filters** ▾

Options

Do not fill Qty. to Handle

Reserved stock only Full ▾

Filter: Warehouse Request

× Location Code SILVER ▾

× Source Document Sales Order ▾

× Source No. ▾

+ Filter...

Schedule...

OK

Cancel

Calc. Consumption



Options

Posting Date 4/10/2023

Calculation Based on Expected Output ▾

Picking Location ▾

Reserved from stock Full ▾

Filter: Production Order

× No. ▾

+ Filter...

Filter totals by:

+ Filter...

Filter: Prod. Order Component

× Item No. ▾

OK

Cancel

Summary



QUESTIONS ?



THANK YOU

CUSTOMER DAY 2023

